

U.S. National Ice Center

PRESS RELEASE

FOR IMMEDIATE RELEASE

Contact: LTJG Bryan R. Brasher, NOAA
NIC.PAO@noaa.gov
301-943-6977



Iceberg B-44 Have Calved from Pine Island Glacier

September 25, 2017, Suitland, MD — The U.S. National Ice Center (USNIC) discovered a new iceberg that meets the criteria for naming and tracking by the NIC. This particular iceberg is believed to have calved from the Pine Island Glacier. B-44 is located at 74°57' South, 101°03' West, in the Amundsen Sea. Iceberg B-44 measures 15 nautical miles on its longest axis and 5 nautical miles on its widest axis, with an area of 54 square nautical miles. Analyst Matthew Welshans located B-44 using Sentinel-1 image shown below.

Iceberg names are derived from the Antarctic quadrant in which they were originally calved. The quadrants are divided counter-clockwise in the following manner:

- A = 0-90W (Bellingshausen/Weddell Sea)
- B = 90W-180 (Amundsen/Eastern Ross Sea)
- C = 180-90E (Western Ross Sea/Wilkesland)
- D = 90E-0 (Amery/Eastern Weddell Sea)

When first sighted, an iceberg's point of origin is documented by USNIC. The letter of the quadrant, along with a sequential number, is assigned to the iceberg. For example, C-19 is sequentially the 19th iceberg tracked by USNIC in Antarctica between 180-90E (Quadrant C). Icebergs with letter suffixes have calved from already named icebergs, where the letters are added in sequential order. For example, C-19D is the 4th iceberg to calve off the original C-19 iceberg.

Iceberg positions are analyzed weekly and are available on the USNIC webpage at:
<https://usicecenter.gov/Products/AntarcIcebergs>

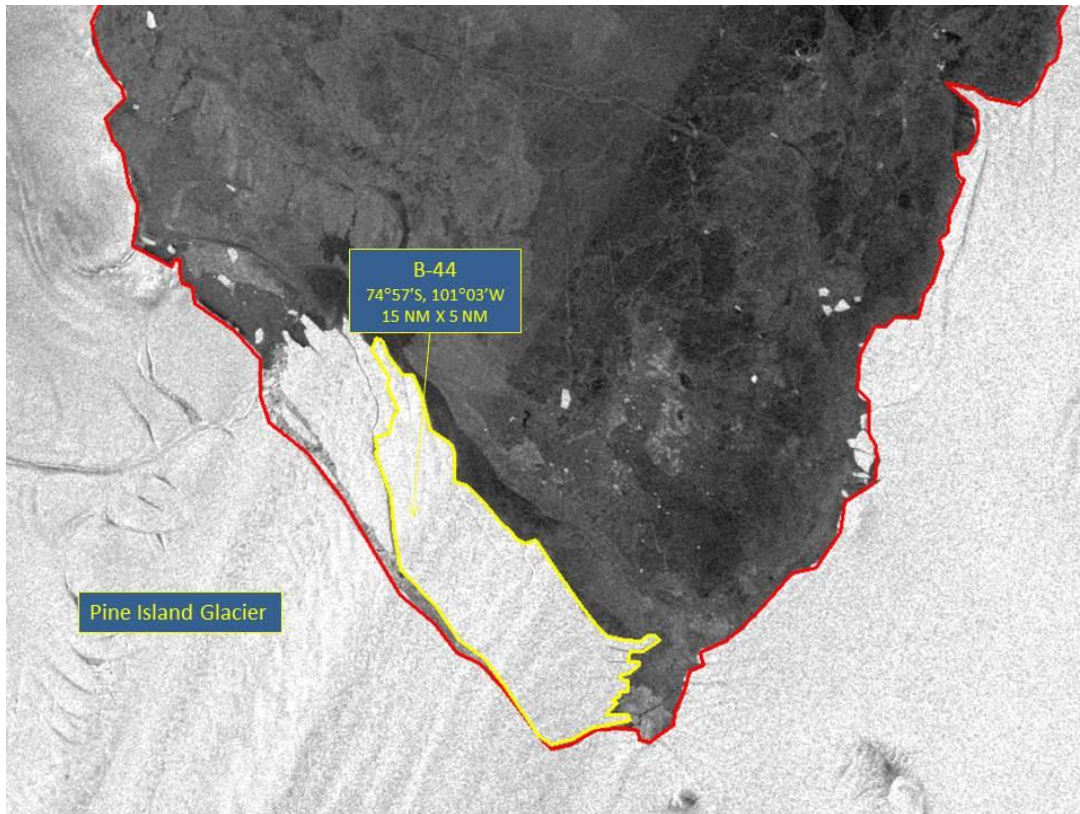


Figure 1: Sentinel-1 image of B-44, September 23, 2017

USNIC is a multi-agency center—subordinate to Naval Meteorology and Oceanography Command—operated by the Navy, NOAA, and Coast Guard which provides global to tactical scale ice and snow products, ice forecasting, and related environmental intelligence services for the United States government.

Naval Meteorology and Oceanography Command directs and oversees more than 2,500 globally-distributed military and civilian personnel who collect, process and exploit environmental information to assist Fleet and Joint Commanders in all warfare areas to make better decisions faster than the adversary.

For more information, please contact:
U.S. National Ice Center
Command Duty Officer
E-mail: nic.cdo@noaa.gov
Voice: (301) 943-6977
Visit us on Facebook at: <https://www.facebook.com/usnatice/>

